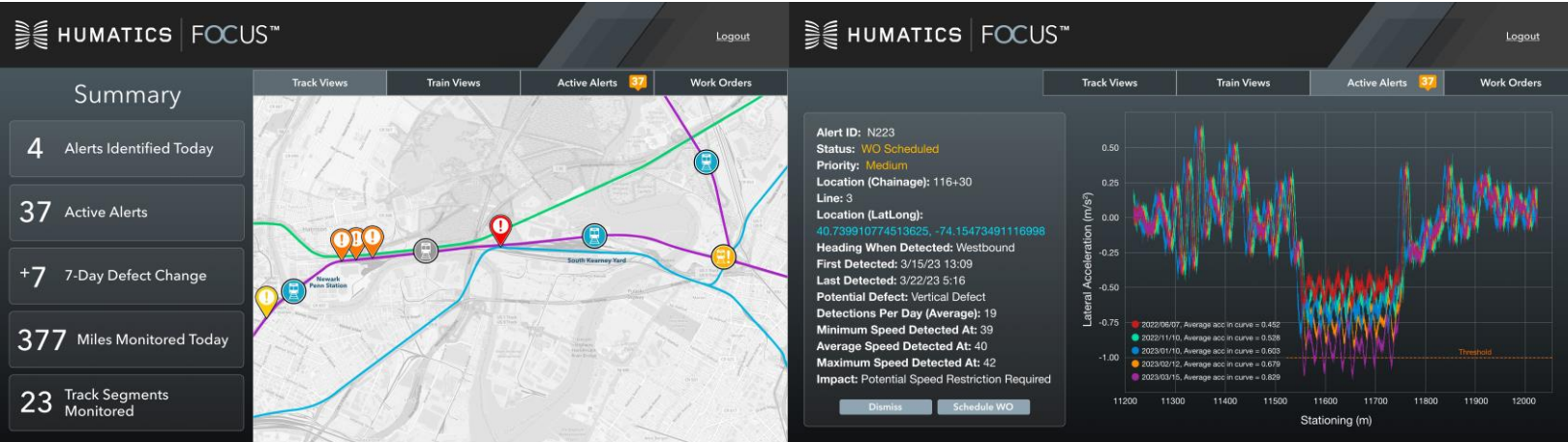


# Real-Time Track Condition Monitoring At Your Fingertips

With Humatics Focus™, the power of big data and precise positioning provides real-time insights into changing track conditions, allowing you to focus on the most urgent issues and keep the infrastructure in a state of good repair.






## How it works

1. Onboard sensors continuously collect positional and inertial data for each outfitted revenue service train.
2. Each revenue service trip feeds data into Humatics Focus™ Machine Learning (ML) and Artificial Intelligence (AI) algorithms
3. Focus™ identifies deviations which are geotagged and characterized by frequency and severity
4. Optionally, inspections and corrective action are scheduled and completed via API plugins to Computerized Maintenance Management Systems (CMMS) and Enterprise Asset Management Systems (EAM)
5. Over time, every piece of additional data enables Focus to improve accuracy and automatically assign corrective actions and recommendations.

*“40% of issues reported either can’t be found or the crews fix a different problem”*

**Transit Agency Maintenance Executive, speaking on existing track condition monitoring**

## Benefits

-  Enable predictive maintenance
-  Standalone solution
-  Fleet monitoring



*With deployments in 4 countries, Humatics has the experience to deliver. Most recently Humatics Focus™ was installed on two of NJT’s Newark Light Rail Vehicles in May 2023. Focus™ monitored track conditions on the Newark Light Rail Line, a five-mile line from the Grove Street Station to Newark Penn Station. Humatics analyzed data from 626 round trips, collecting over 5,000 miles of track condition data and confirming that the line is in a state of good repair. Humatics Focus™ is set to be expanded onto two additional rail lines in Fall 2023. Contact [transit@humatics.com](mailto:transit@humatics.com) to explore how Humatics can help meet your infrastructure monitoring needs.*

**Humatics Partners:**

